

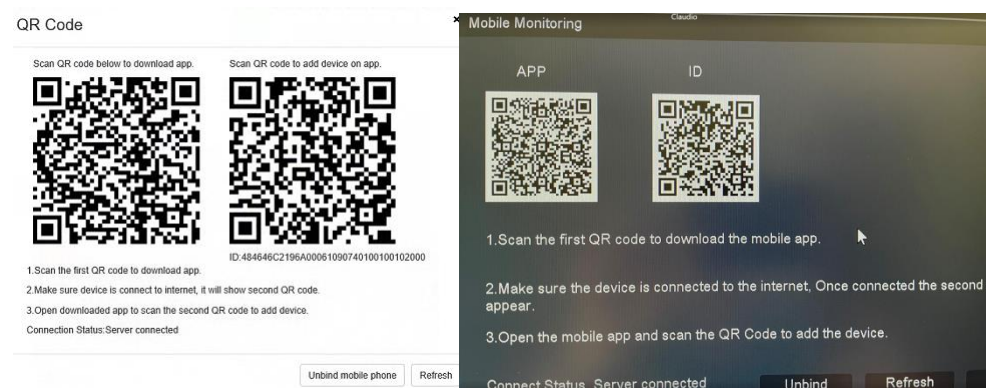
## Various methods for adding devices to app

**Description:** You will learn how to add device to APP by this document

### Method 1 Scan device QR code to add device

Camera we can find QR code in web interface

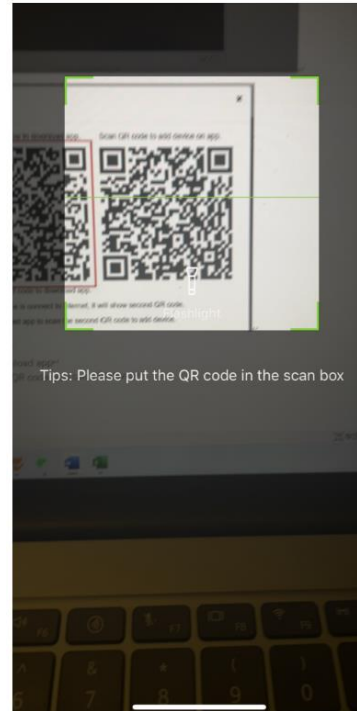
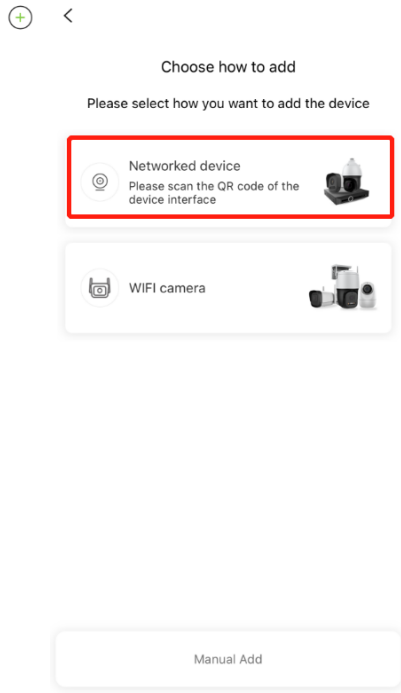
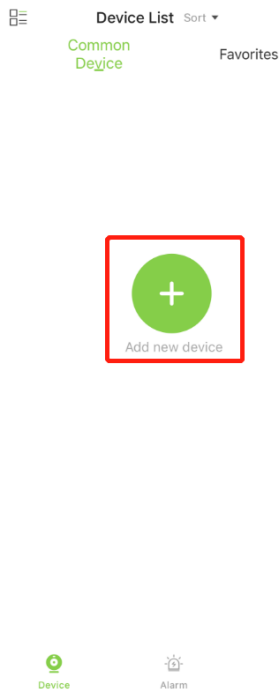
NVR we can find QR code in web interface and GUI interface



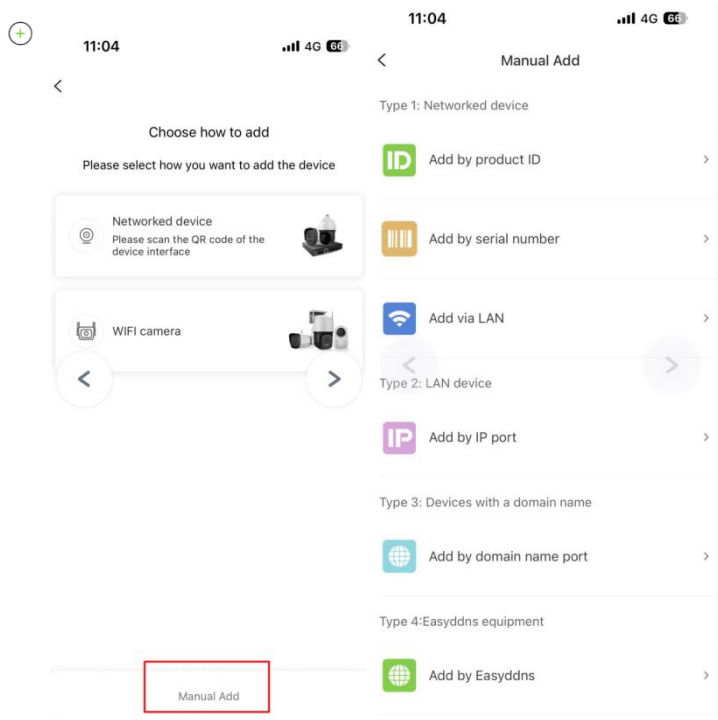
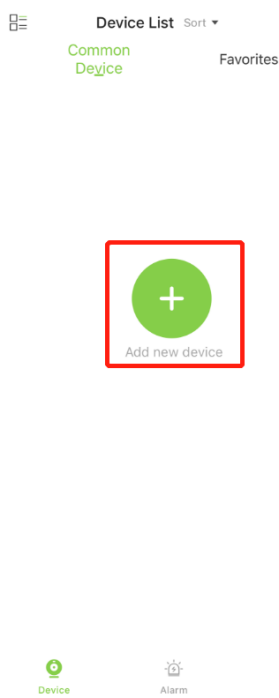
### Add camera at APP

Scan first QR cord to download app

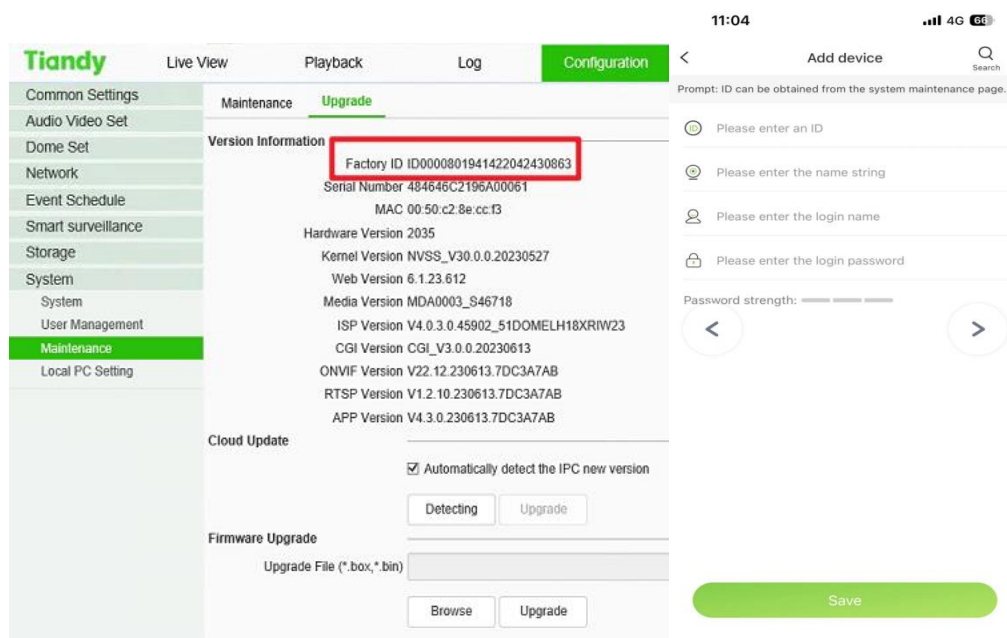
Use our APP scan second QR code, you can add device



## Method 2 Manual add

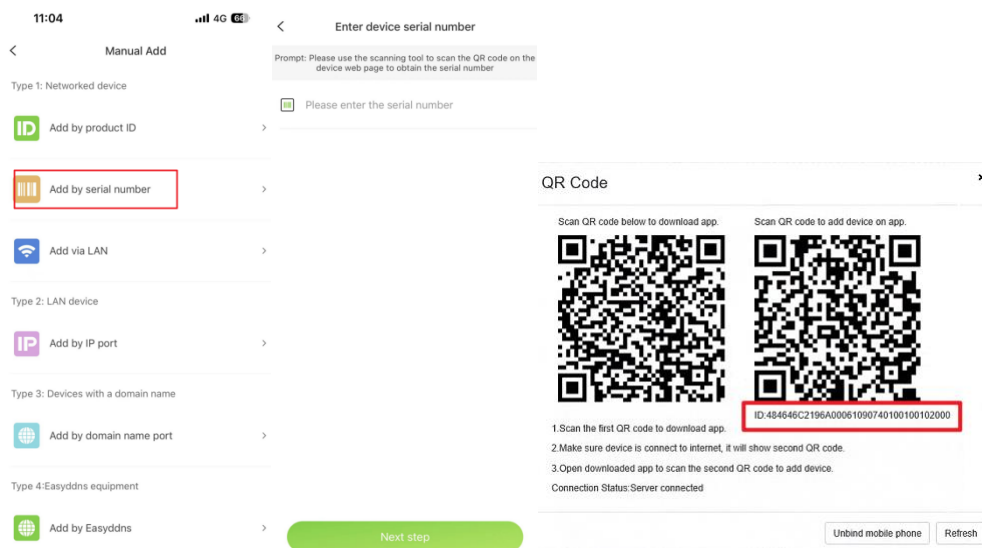


## 1、 Add by product ID(pay attention to,only P2P-T device support add by product ID)



## 2、 Add by Serial Number(only P2P-A device support this function)

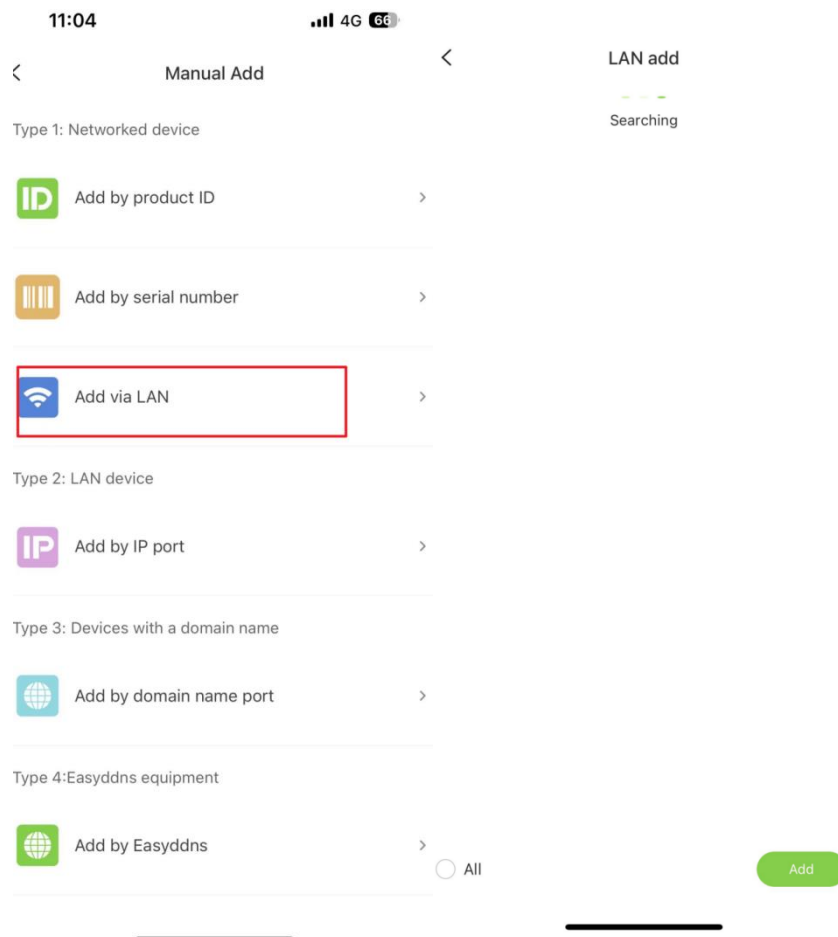
- ① click add by device number
- ② The serial number need use below QR code number



### 3、Add by LAN

①Click Add via LAN

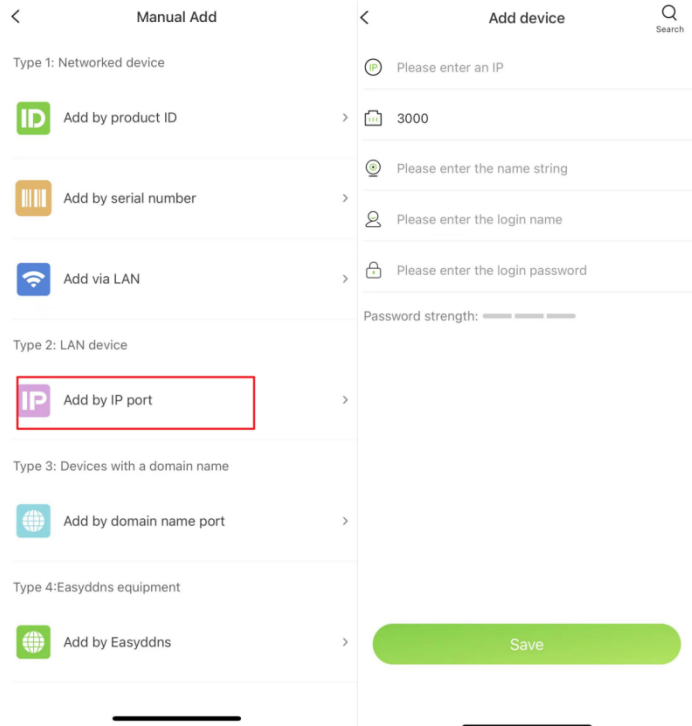
②choose the LAN device add



### 4、Add by IP port (Pay attention add LAN device)

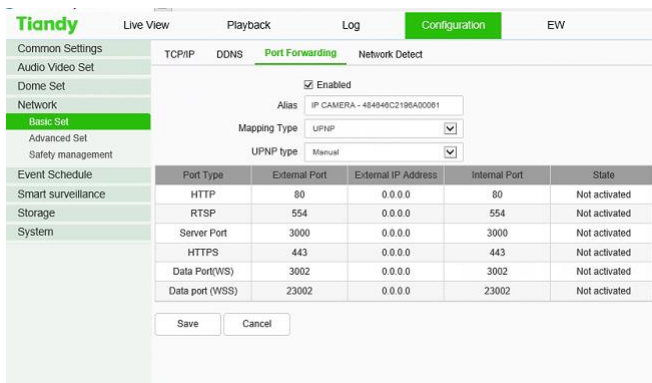
①Click Add by IP port

②Input LAN device information

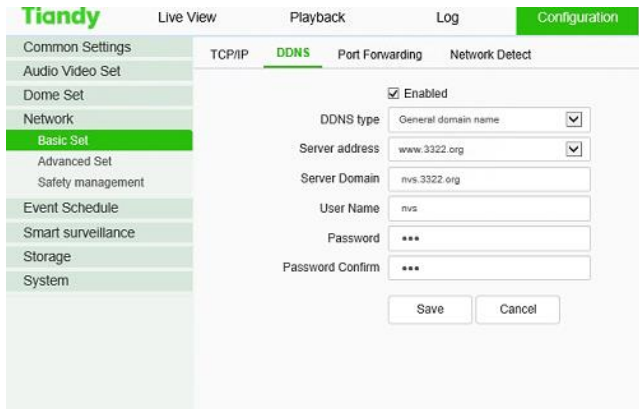


## 5、Add by DDNS

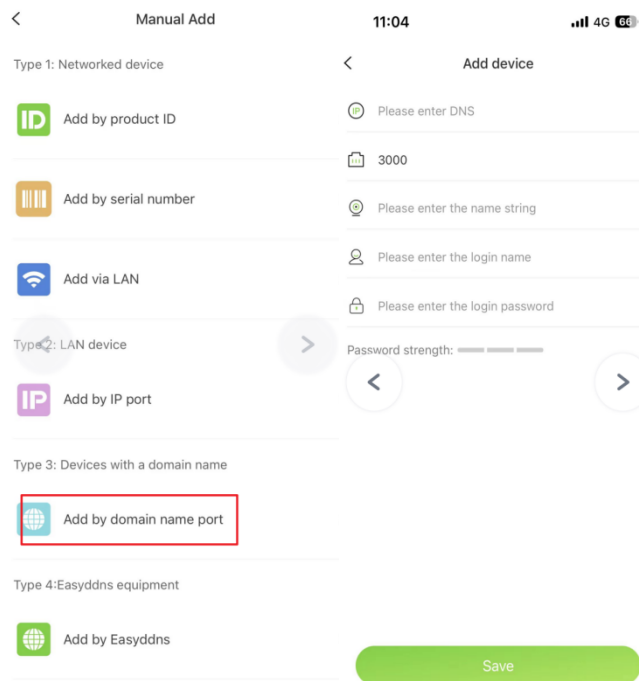
### ① Device open Port Forwarding



### ② Enable DDNS



### ③Add by Easylive-plus



## 6、Add by EasyDDNS

